

东莞市人民政府土地征收预公告

(7)〔2024〕第2号

依据《中华人民共和国土地管理法》第四十五条、第四十七条的规定，为维护被征地农民的知情权，现发布《土地征收预公告》，并将有关内容和事项公告如下：

一、征收土地的位置和范围：位于东莞市长安镇新安增田股份经济合作社、东莞市长安镇经济联合总社，具体征地范围以征地范围红线图中红线圈定和坐标标定的位置为准。

二、征收土地目的：为实施保障性安居工程建设。

三、征收土地的权属、面积和用途：

被征地集体经济组织	面积（公顷）	拟开发用途
长安镇新安增田股份经济合作社	0.0176	公用设施用地
长安镇经济联合总社	0.8280	
合计	0.8456	—

四、开展土地现状调查的安排：自本公告发布之日起，我市将组织有关征地机构和测量单位，进入拟征地现场，对土地的权属、地类、面积以及农村村民住宅、其他地上附着物和青苗等的权属、种类、数量等的土地现状进行调查，请各相关单位和个人相互知照，并予以配合。

五、公告期限：自本启动公告张贴之日起10个工作日。

六、注意事项：自本启动公告发布之日起，除正常农业生产外，任何单位和个人不得在拟征地范围内抢栽抢建；违反规定抢栽抢建的，征地时一律不予补偿。

特此公告。

附件：征地范围红线图

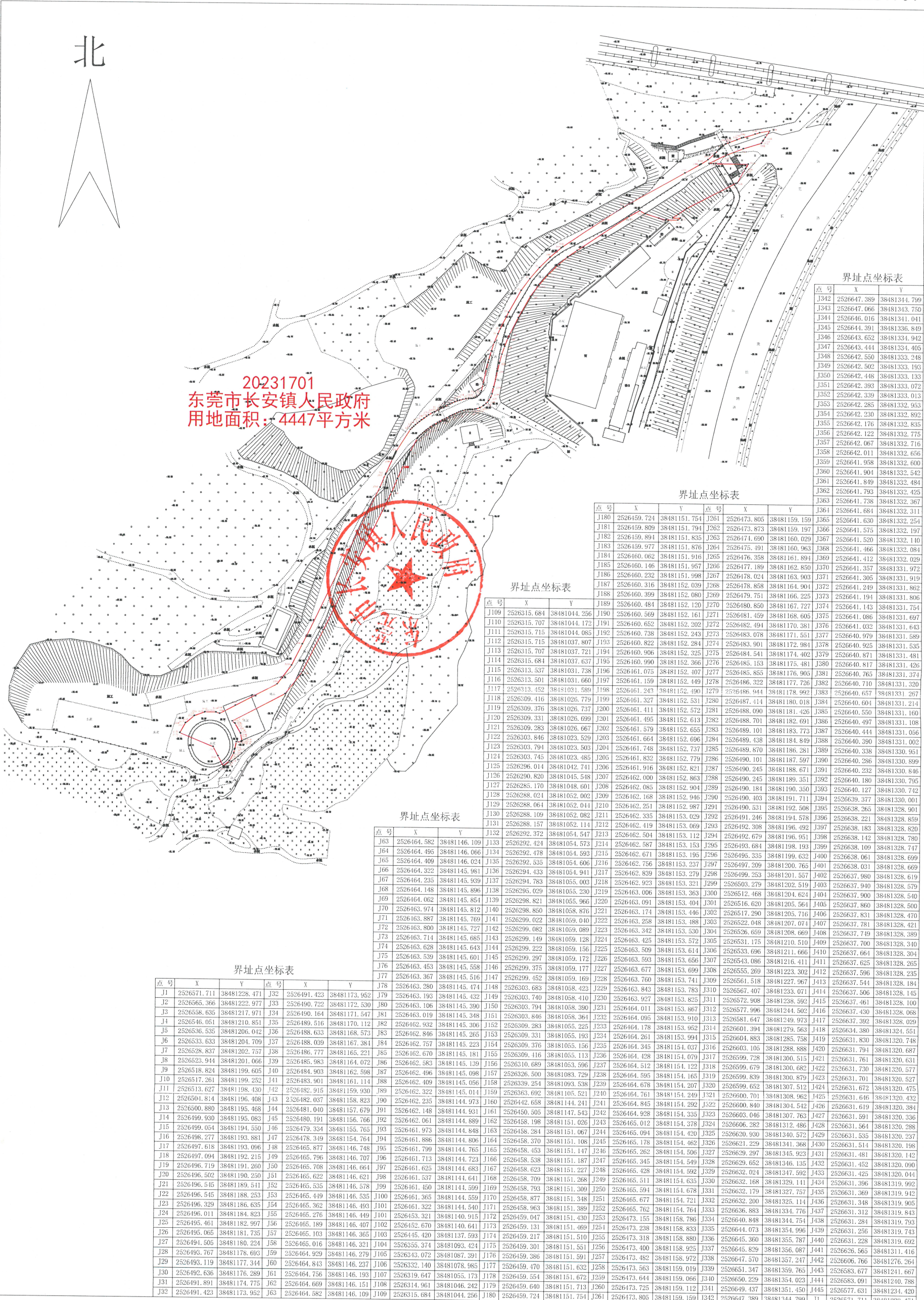
公开方式：主动公开



东莞市长安镇人民政府用地红线图(地块一)

20231701

北



20231701
 东莞市长安镇人民政府
 用地面积: 4447平方米

界址点坐标表

点号	X	Y
J342	2526647.389	38481344.799
J343	2526647.066	38481343.750
J344	2526646.016	38481341.041
J345	2526644.391	38481336.849
J346	2526643.652	38481334.942
J347	2526643.444	38481334.405
J348	2526642.550	38481333.248
J349	2526642.502	38481333.193
J350	2526642.448	38481333.133
J351	2526642.393	38481333.072
J352	2526642.339	38481333.013
J353	2526642.285	38481332.953
J354	2526642.230	38481332.892
J355	2526642.176	38481332.835
J356	2526642.122	38481332.775
J357	2526642.067	38481332.716
J358	2526642.011	38481332.656
J359	2526641.958	38481332.600
J360	2526641.904	38481332.542
J361	2526641.849	38481332.484
J362	2526641.793	38481332.425
J363	2526641.738	38481332.367
J364	2526641.684	38481332.311
J365	2526641.630	38481332.254
J366	2526641.575	38481332.197
J367	2526641.520	38481332.140
J368	2526641.466	38481332.084
J369	2526641.412	38481332.029
J370	2526641.357	38481331.972
J371	2526641.305	38481331.919
J372	2526641.249	38481331.862
J373	2526641.194	38481331.806
J374	2526641.143	38481331.754
J375	2526641.086	38481331.697
J376	2526641.032	38481331.643
J377	2526640.979	38481331.589
J378	2526640.925	38481331.535
J379	2526640.871	38481331.481
J380	2526640.817	38481331.426
J381	2526640.765	38481331.374
J382	2526640.710	38481331.320
J383	2526640.657	38481331.267
J384	2526640.604	38481331.214
J385	2526640.550	38481331.160
J386	2526640.497	38481331.108
J387	2526640.444	38481331.056
J388	2526640.390	38481331.002
J389	2526640.338	38481330.951
J390	2526640.286	38481330.899
J391	2526640.232	38481330.846
J392	2526640.180	38481330.795
J393	2526640.127	38481330.742
J394	2526639.377	38481330.001
J395	2526638.265	38481328.901
J396	2526638.221	38481328.859
J397	2526638.183	38481328.820
J398	2526638.142	38481328.780
J399	2526638.109	38481328.747
J400	2526638.061	38481328.699
J401	2526638.031	38481328.669
J402	2526638.001	38481328.641
J403	2526637.970	38481328.619
J404	2526637.940	38481328.579
J405	2526637.900	38481328.540
J406	2526637.860	38481328.500
J407	2526637.821	38481328.470
J408	2526637.781	38481328.421
J409	2526637.749	38481328.389
J410	2526637.700	38481328.340
J411	2526637.664	38481328.304
J412	2526637.625	38481328.265
J413	2526637.596	38481328.235
J414	2526637.544	38481328.184
J415	2526637.506	38481328.145
J416	2526637.430	38481328.068
J417	2526637.392	38481328.029
J418	2526634.380	38481324.561
J419	2526631.830	38481320.748
J420	2526631.791	38481320.687
J421	2526631.761	38481320.631
J422	2526631.730	38481320.577
J423	2526631.701	38481320.527
J424	2526631.672	38481320.475
J425	2526631.645	38481320.432
J426	2526631.619	38481320.384
J427	2526631.591	38481320.336
J428	2526631.564	38481320.288
J429	2526631.535	38481320.237
J430	2526631.514	38481320.198
J431	2526631.481	38481320.142
J432	2526631.452	38481320.090
J433	2526631.425	38481320.044
J434	2526631.396	38481319.992
J435	2526631.369	38481319.940
J436	2526631.348	38481319.905
J437	2526631.312	38481319.843
J438	2526631.284	38481319.793
J439	2526631.256	38481319.743
J440	2526631.228	38481319.692
J441	2526631.200	38481319.642
J442	2526631.172	38481319.592
J443	2526631.144	38481319.542
J444	2526631.116	38481319.492
J445	2526631.088	38481319.442
J446	2526631.060	38481319.392
J447	2526631.032	38481319.342
J448	2526631.004	38481319.292
J449	2526630.976	38481319.242
J450	2526630.948	38481319.192
J451	2526630.920	38481319.142
J452	2526630.892	38481319.092
J453	2526630.864	38481319.042
J454	2526630.836	38481318.992
J455	2526630.808	38481318.942
J456	2526630.780	38481318.892
J457	2526630.752	38481318.842
J458	2526630.724	38481318.792
J459	2526630.696	38481318.742
J460	2526630.668	38481318.692
J461	2526630.640	38481318.642
J462	2526630.612	38481318.592
J463	2526630.584	38481318.542
J464	2526630.556	38481318.492
J465	2526630.528	38481318.442
J466	2526630.500	38481318.392
J467	2526630.472	38481318.342
J468	2526630.444	38481318.292
J469	2526630.416	38481318.242
J470	2526630.388	38481318.192
J471	2526630.360	38481318.142
J472	2526630.332	38481318.092
J473	2526630.304	38481318.042
J474	2526630.276	38481317.992
J475	2526630.248	38481317.942
J476	2526630.220	38481317.892
J477	2526630.192	38481317.842
J478	2526630.164	38481317.792
J479	2526630.136	38481317.742
J480	2526630.108	38481317.692
J481	2526630.080	38481317.642
J482	2526630.052	38481317.592
J483	2526630.024	38481317.542
J484	2526630.000	38481317.500

界址点坐标表

界址点坐标表

界址点坐标表

界址点坐标表

点号	X	Y	点号	X	Y
J1	2526571.711	38481228.471	J32	2526491.423	38481173.952
J2	2526565.366	38481222.977	J33	2526490.722	38481172.530
J3	2526558.635	38481217.971	J34	2526490.164	38481171.547
J4	2526546.051	38481210.851	J35	2526489.516	38481170.112
J5	2526536.535	38481206.042	J36	2526488.633	38481168.573
J6	2526533.633	38481204.709	J37	2526488.039	38481167.381
J7	2526528.837	38481202.757	J38	2526486.777	38481165.221
J8	2526523.944	38481201.066	J39	2526485.983	38481164.072
J9	2526518.824	38481199.605	J40	2526484.903	38481162.598
J10	2526517.261	38481199.252	J41	2526483.901	38481161.114
J11	2526513.627	38481198.430	J42	2526482.915	38481159.930
J12	2526504.814	38481196.408	J43	2526482.037	38481158.823
J13	2526500.880	38481195.468	J44	2526481.040	38481157.679
J14	2526499.930	38481195.083	J45	2526480.191	38481156.792
J15	2526498.054	38481194.550	J46	2526479.334	38481155.765
J16	2526498.277	38481193.881	J47	2526478.349	38481154.764
J17	2526497.618	38481193.006	J48	2526465.877	38481146.748
J18	2526497.094	38481192.215	J49	2526465.796	38481146.664
J19	2526496.719	38481191.260	J50	2526465.708	38481146.604
J20	2526496.502	38481190.250	J51	2526465.622	38481146.621
J21	2526496.545	38481189.541	J52	2526465.535	38481146.578
J22	2526496.545	38481188.253	J53	2526465.449	38481146.535
J23	2526496.329	38481186.635	J54	2526465.362	38481146.493
J24	2526496.011	38481184.823	J55	2526465.276	38481146.449
J25	2526495.461	38481182.997	J56	2526465.189	38481146.407
J26	2526495.065	38481181.735	J57	2526465.103	38481146.365
J27	2526494.505	38481180.224	J58	2526465.016	38481146.321
J28	2526493.767	38481178.693	J59	2526464.929	38481146.279
J29	2526493.119	38481177.344	J60	2526464.843	38481146.237
J30	2526492.636	38481176.289	J61	2526464.756	38481146.193
J31	2526491.891	38481174.775	J62	2526464.669	38481146.151
J32	2526491.423	38481173.952	J63	2526464.582	38481146.109

广东广量测绘信息技术有限公司

2023年11月数字化测图

1985国家高程基准, 基本等高距为0.5米

2017年版式图

1:3000

测量员:

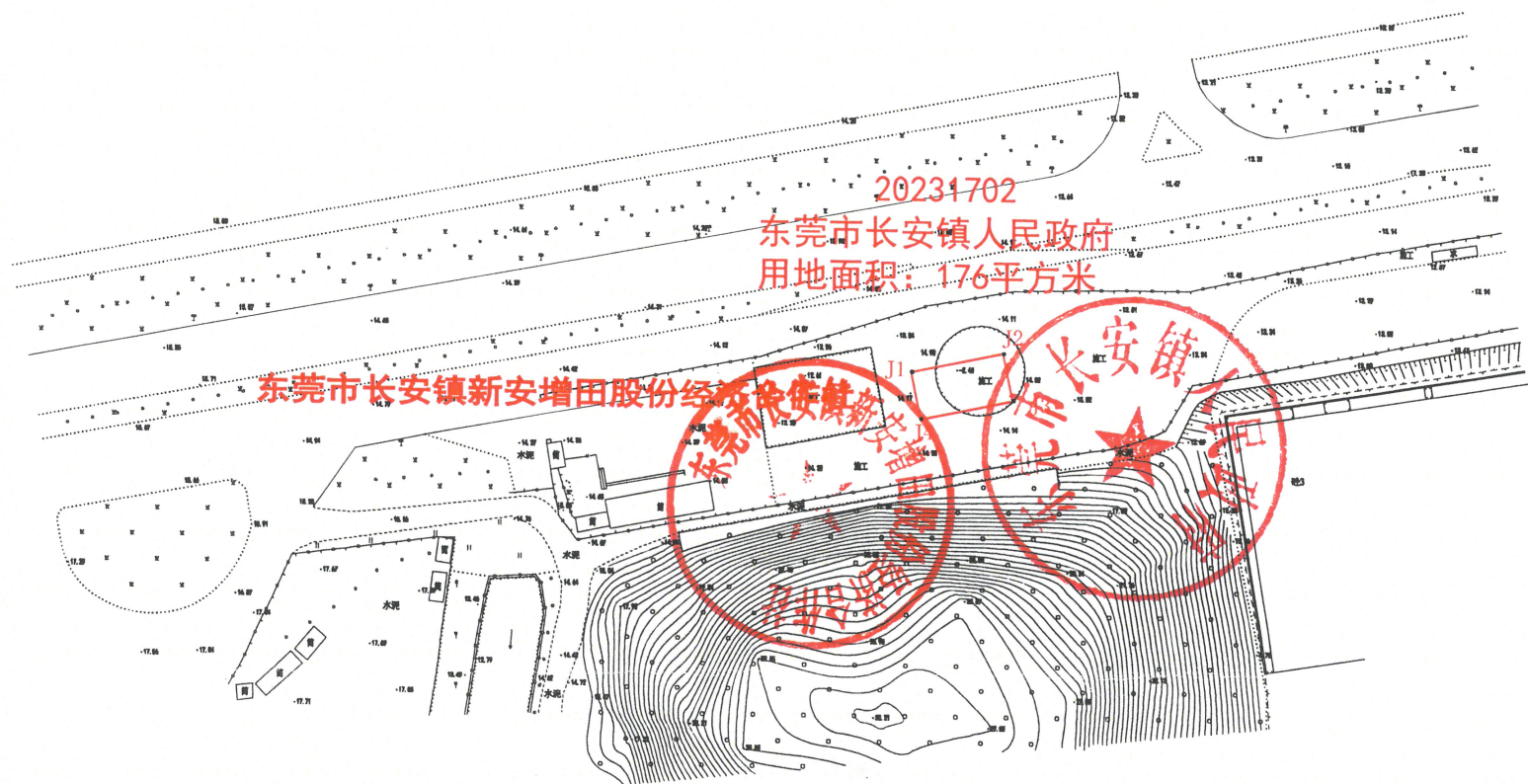
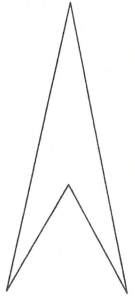
制图员:

审核员:

东莞市长安镇人民政府用地红线图(地块二)

20231702

北



界址点坐标表

点号	X	Y
J1	2525560.871	38477455.353
J2	2525564.665	38477473.460
J3	2525555.367	38477475.408
J4	2525551.573	38477457.301

广东广量测绘信息技术有限公司

2023年11月数字化测图

1985国家高程基准,基本等高距为0.5米

2017年版式图

1:2000

测量员: 赖亚强

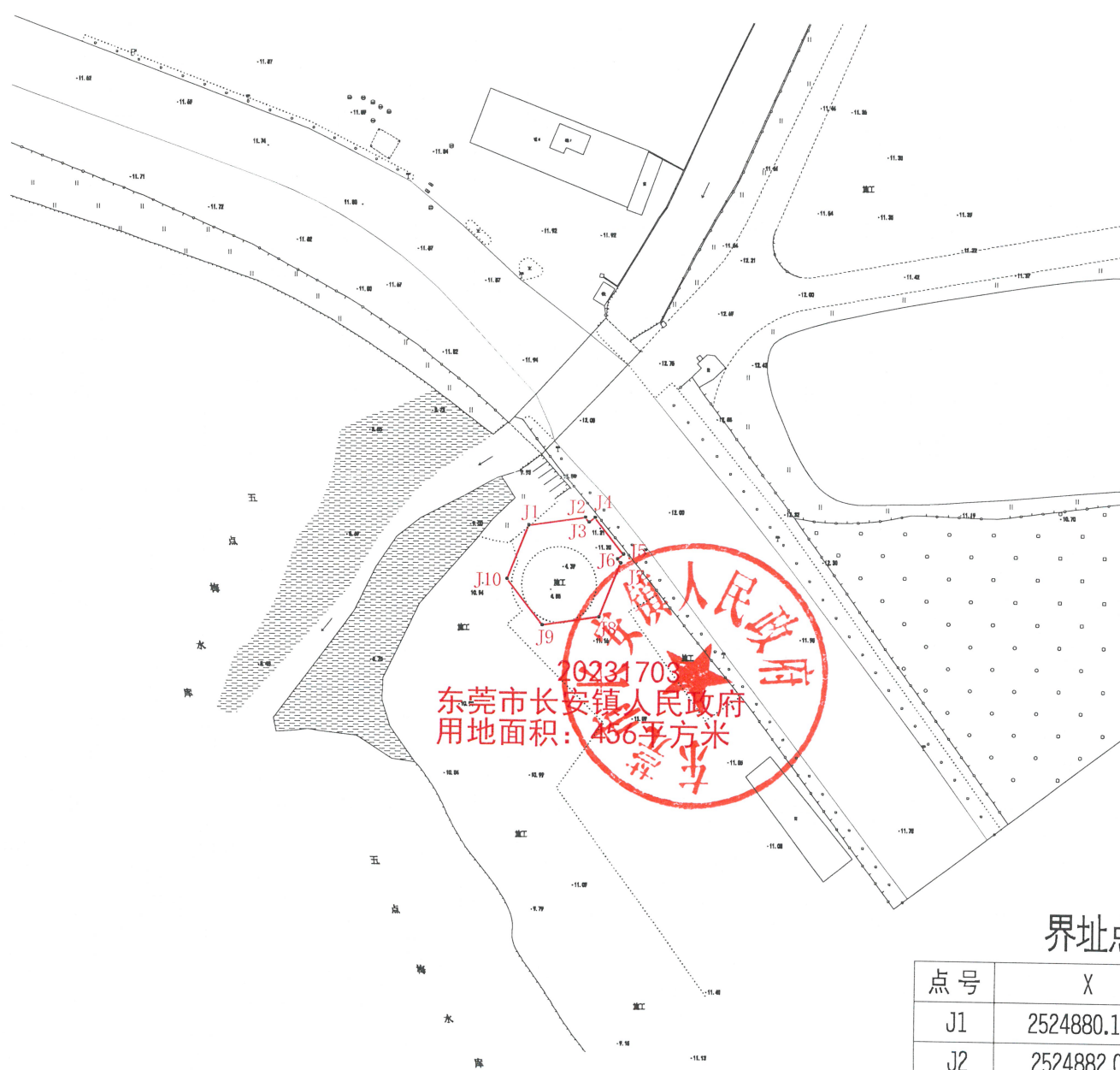
制图员: 陈振芳

审核员: 欧正

东莞市长安镇人民政府用地红线图(地块三)

20231703

北



界址点坐标表

点号	X	Y
J1	2524880.171	38476215.295
J2	2524882.059	38476228.147
J3	2524881.008	38476228.978
J4	2524882.050	38476230.317
J5	2524873.827	38476236.847
J6	2524872.774	38476235.494
J7	2524871.872	38476236.208
J8	2524859.798	38476231.417
J9	2524857.910	38476218.565
J10	2524868.096	38476210.504

广东广量测绘信息技术有限公司

2023年11月数字化测图

1985国家高程基准, 基本等高距为0.5米

2017年版式图

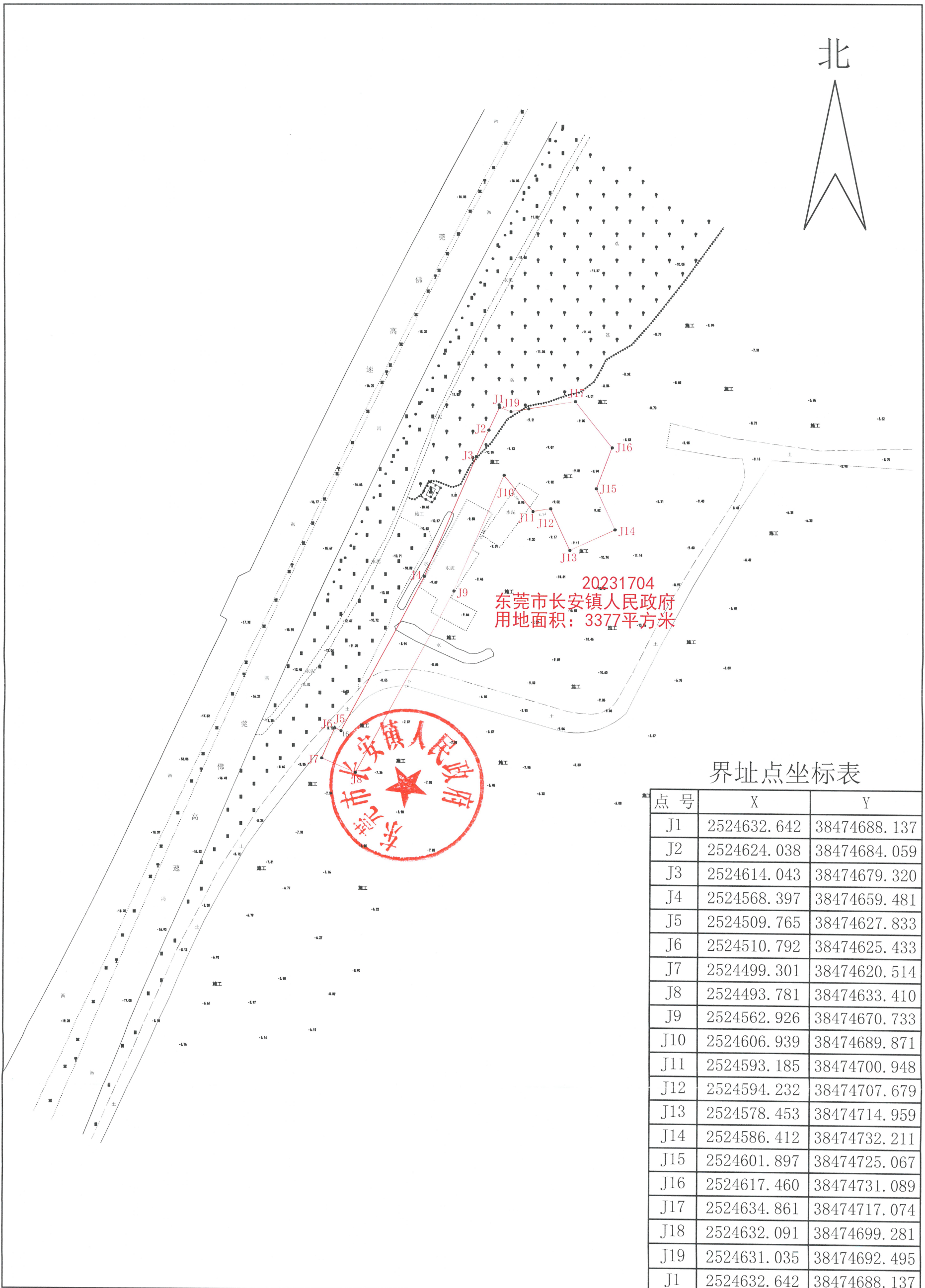
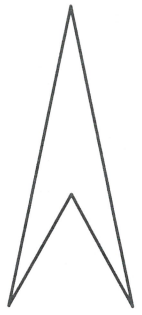
1:2000

测量员:

制图员:

审核员:

北



界址点坐标表

点号	X	Y
J1	2524632.642	38474688.137
J2	2524624.038	38474684.059
J3	2524614.043	38474679.320
J4	2524568.397	38474659.481
J5	2524509.765	38474627.833
J6	2524510.792	38474625.433
J7	2524499.301	38474620.514
J8	2524493.781	38474633.410
J9	2524562.926	38474670.733
J10	2524606.939	38474689.871
J11	2524593.185	38474700.948
J12	2524594.232	38474707.679
J13	2524578.453	38474714.959
J14	2524586.412	38474732.211
J15	2524601.897	38474725.067
J16	2524617.460	38474731.089
J17	2524634.861	38474717.074
J18	2524632.091	38474699.281
J19	2524631.035	38474692.495
J1	2524632.642	38474688.137

广东广量测绘信息技术有限公司

2023年11月数字化测图

1985国家高程基准,基本等高距为0.5米

2017年版式图

1:2000

测量员:

制图员:

审核员: